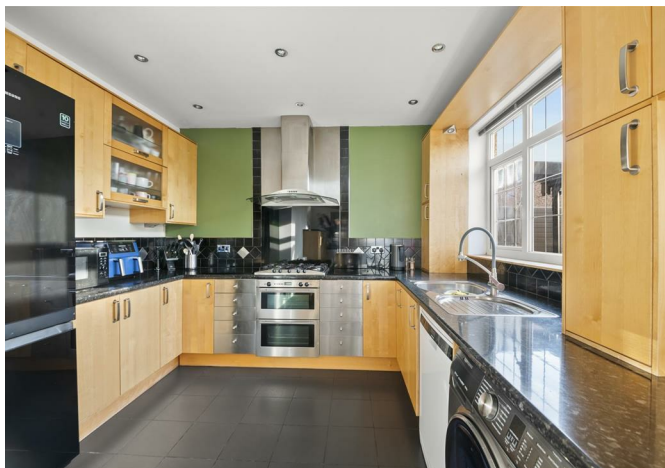


**ALLDAY
& MILLER**



Rosebury Vale, Ruislip, HA4 6AQ
£930,000

4 2 2 D



Rosebury Vale, Ruislip, HA4 6AQ

£930,000

- Four Double Bedrooms
- Integral Garage
- Short Walk From Ruislip High Street
- Peaceful Location Backing Fields
- 2041 Sq Ft
- Stunning Ground Floor Extension
- Two Bathrooms
- 1930's Bowers Built
- Easy Access to Various Train Stations
- Bi Fold Doors Over Looking The Rear

Description

This stunning family home offers an impressive 2,041 Sq Ft living space, perfect for modern family life. The property is presented in excellent condition, ensuring a welcoming atmosphere from the moment you step inside. Comprising of a spacious reception room, a bathroom, fitted kitchen, a family/dining room with two sets of bifold doors providing access to the rear.

The first floor boasts three generously sized bedrooms, accompanied by a large stylish three piece bathroom.

Ascend to the second floor, where you will discover a further double bedroom by way of the loft conversion .

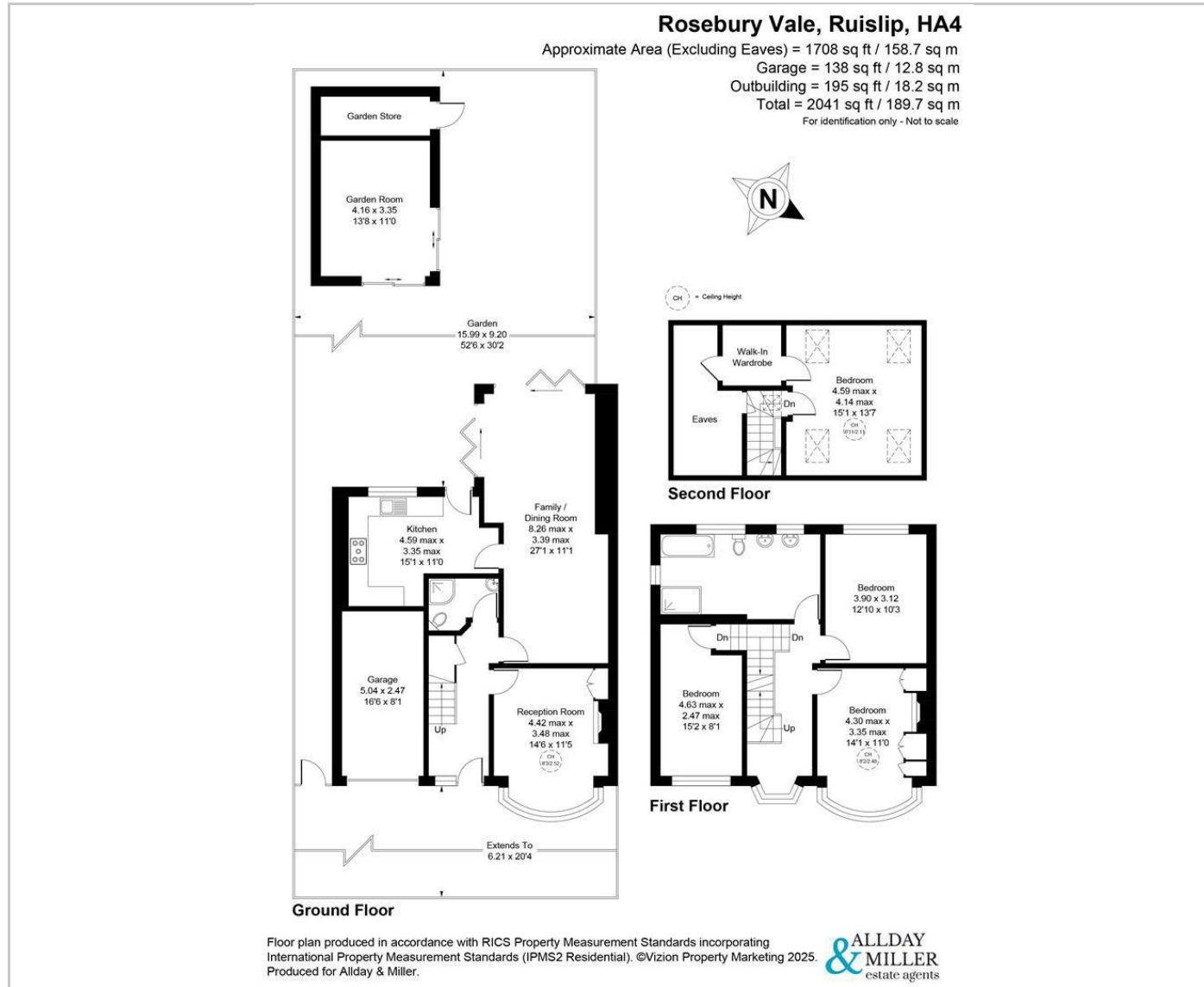
The exterior of the property features a front driveway that provides convenient off-street parking, as well as a garage. To the rear is a beautiful private garden perfect for dining & entertainment an brick built outbuilding with store completes the home.

Situation

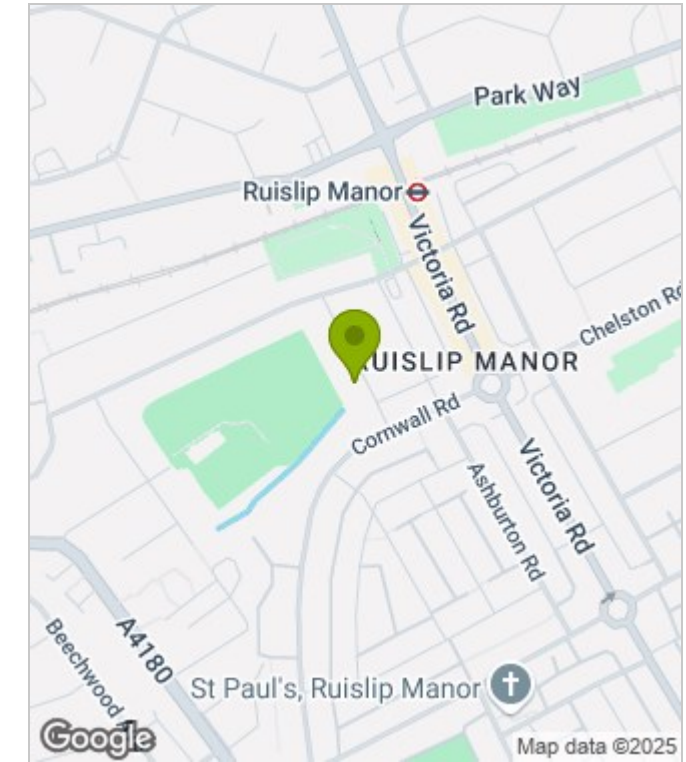
Rosebury Vale is perfectly positioned in Ruislip just moments from the High Street and its multitude of shops, cafes, takeaways, coffee shops and restaurants. The property backs onto Grosvenor vale a Stadium/arena for those who enjoy football. Several local bus links available to the local area and Metropolitan/Piccadilly line train station. Ruislip manor station within walking distance and South Ruislip station is a 6 minute drive away with the Central Line. The A40/M40 and M4 are a short drive away offering access to London, Heathrow and the Home Counties. There are a number of popular local schools within close proximity including Lady Bankes and Sacred Heart both are ranked outstanding.



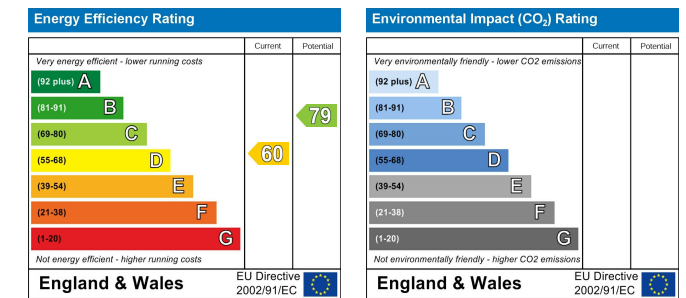
Floor Plans



Area Map



Energy Performance Graph



These particulars, whilst believed to be accurate are set out as a general outline only for guidance and do not constitute any part of an offer or contract. Intending purchasers should not rely on them as statements of representation of fact, but must satisfy themselves by inspection or otherwise as to their accuracy. No person in this firm's employment has the authority to make or give any representation or warranty in respect of the property.

www.alldayandmiller.co.uk

192 High Street, Uxbridge, Middlesex, UB8 1LB

T: 01895 641 000 | E: sales@alldayandmiller.co.uk
 T: 01895 379 549 | E: lettings@alldayandmiller.co.uk